



Dormex Containers Ltd

**Beauty &  
Personal Care**

# Airless Systems



## Amplify

- Key Features**
- Pure Path technology for metal-free fluid path.
  - Low force-to-actuate, no squeezing of tube.
  - Convenient and portable.

**Diameters**  
30, 35mm

**Output**  
0.40ml

**Applications**  
Skin care, hair care, make-up, lotions, creams, metal-sensitive and medium-to-high viscosity formulas.



## HVD

- Key Features**
- Strong shelf presence
  - Suitable for high-viscosity formulas.
  - Bottom-fill.

**Output**  
Up to 2.50ml

**Applications**  
Oral care, hair creams, pastes, waxes, high-viscosity formulas.



## Pearl Airless & Pearl Elegance

- Key Features**
- All plastic.
  - Low force-to-actuate.
  - Nozzle plug optional.
  - Top-fill.
  - Two head designs: Standard & Elegance
  - Wide bottle.
  - Opening for easy filling.

**Closure Sizes**  
48mm

**Airless Bottles**  
50, 100, 150, 200ml

**Output**  
1ml

**Applications**  
Personal care, make-up, lotions, medium-to high- viscosity formulas.



## Pearl Mini Airless & Pearl Mini Elegance

- Key Features**
- All plastic.
  - Low force-to-actuate.
  - Top-fill.
  - Two head designs: Standard & Elegance
  - Wide bottle.

**Closure Sizes**  
32mm

**Airless Bottles**  
15, 30, 50ml

**Output**  
0.40ml

**Applications**  
Skin care, make-up, lotions, creams, medium-to high- viscosity formulas.

# Low Output Dispensers



## Aria & Prelude

- Key Features**
- Pure Path technology for metal-free fluid path.
  - Lock-up design.
  - Wide range of customization.
  - Optional metal overshell and custom hot stamping.
  - Optional dust cover (Aria only)

**Closure Sizes**  
Tapered: 18-400, 18-410, 18-415, 20-400, 20-410  
Straight: 18-400, 18-410, 20-400, 20-410, convex, silhouette

**Output**  
0.15, 0.23ml

**Applications**  
Skin care, make-up, metal-sensitive and high-viscosity formulas.



## Sonnet & Sonata

- Key Features**
- Pure Path technology for metal-free fluid path.
  - Lock-up design.
  - Wide range of customization.
  - Optional metal overshell and custom hot stamping.

**Closure Sizes**  
Tapered: 22-400, 22-410, 24-410  
Straight: 22-410

**Output**  
0.50ml

**Applications**  
Skin care, hair care, make-up, facial cleansers, metal-sensitive and high-viscosity formulas.



## PurePress

- Key Features**
- Easy one-hand application.
  - Lock-up design.
  - All-plastic valving automatically reseals in up position.
  - Integrated cap with living hinge.
  - Pure Path technology for a metal-free fluid path.

**Closure Sizes**  
24-410

**Output**  
0.50ml

**Applications**  
Facial cleansers, astringents, antiseptics, hair care and polish removers.



## Rhapsody

- Key Features**
- Classic Design.

**Closure Sizes**  
Ribbed: GL20, 20-400  
Smooth or ribbed: 20-410, 22-415, 24-410

**Output**  
0.16 to 0.30ml

**Applications**  
Skin care, hair care and make-up.



## Sinfonia

- Key Features**
- Distinct and versatile.
  - Wide range of finishes and aesthetics.
  - Caps and safety clip for protection.
  - Solvent-resistant version available.

**Closure Sizes**  
Ferrules, plastic closures, threaded ferrules, closures with overshell.

**Output**  
0.05, 0.07, 0.13, 0.19ml

**Applications**  
Sun care, skin care, hair care and make-up.



# Regular & High Output Dispensers



## SD 20C

### Key Features

- Aesthetic versatility
- Lock-down design provides a compact look.
- Various heads: standard, satin, euro, saddle.

### Closure Sizes

24-400, 24-410, 24-415, 28-400, 28-410, 28-415

### Output

1.50, 2ml

### Applications

Body care, sun care, hair care, hand care



## SD 400

## SD 800, D1

### Key Features

- For large outputs ranging from 4ml - 30ml.
- Can be customized for aggressive formulas including pumice.
- Available in a variety of head style.

### Closure Sizes

28-400, 28-410, 28-415, 33-400, 33-415, 38 BUTT, 38-400, 48-400, 89-400, 11-400

### Output

SD400: 2 to 4 ml  
SD800: 5 to 8 ml  
D1: 7 to 30 ml

### Applications

High-output soaps and lotions, food, complex or aggressive formulas.



## Harmony

### Key Features

- Pure Path technology for a metal-free fluid path.
- Lock-up or lock-down design
- Wide variety of head designs
- Engine concept for easy customization.
- Suitable for high-viscosity formulas.
- Custom metal overshell available.

### Closure Sizes

24-410, 24-415, 28-410, 28-415

### Output

2ml

### Applications

Soaps, lotions, metal sensitive and high-viscosity formulas, conditioners, water-sensitive formulas



## SD 50

### Key Features

- Pure Path technology for a metal-free fluid path.
- Lock-up design
- Suitable for high-viscosity formulas
- Optional metal overshell

### Closure Sizes

20-415, 22-400, 22-410, 22-415, 24-400, 24-415, 28-400, 28-410, 28-415

### Output

0.50ml

### Applications

Creams, lotions, soaps, metal-sensitive and high viscosity formulas.



## P2000

### Key Features

- Pure Path technology for a metal-free fluid path.
- Lock-up design.
- Easy to customise.
- Various heads: standard & belle
- Tamper evident.
- Clockwise or anticlockwise opening sense

### Closure Sizes

24-410, 24-415, 28-410

### Output

2ml

### Applications

Everything from creams and tonics to hair care products and liquid soaps



## SD 200

### Key Features

- Industry standard
- Wide variety of head designs
- Custom metal overshell

### Closure Sizes

20-415, 22-400, 22-410, 22-415, 24-400, 24-415, 28-400, 28-410, 28-415

### Output

0.50ml

### Applications

Creams, lotions, soaps, metal-sensitive and high viscosity formulas.



## Cascade

### Key Features

- Pure Path technology for a metal-free fluid path.
- Premium high-output performance.
- Superior water-shield design.
- Engine concept for easy customization.

### Closure Sizes

28-410, 33-410

### Output

3, 4ml

### Applications

High-output lotions and soaps, shampoos, conditioners, water-sensitive formulas

# Fine Mist Sprayers



## Podle

### Key Features

- Innovate Twoclic locking system.
- Complete integrated package design.
- Snap-on closure
- Decoration options available.

### Closure Sizes

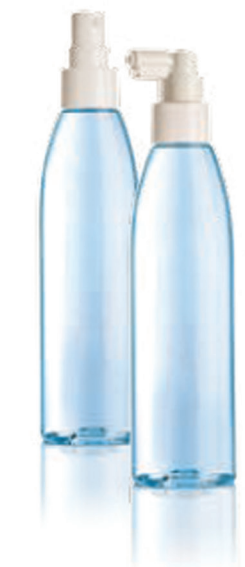
Snap-on

### Output

0.20ml

### Applications

Body care, skin care, sun care, hair care, oral care



## Mark VII Max & Spray Extender

### Key Features

- Excellent atomization capabilities.
- Smooth actuation.
- Contemporary aesthetics.
- Domed or flat hood available.
- Decoration possibilities: hot stamping.

### Closure Sizes

Ribbed: GL20, 20-400  
Smooth or ribbed: 20-410, 22-415, 24-410

Ferrule: 20 mm

Snap: GS30, GS31

### Output

0.16 to 0.30ml

### Applications

Skin care, sun care, hair care, body care, high-viscosity formulas



## Sprayette IV

### Key Features

- Higher output coarse mist sprayer.
- Exceptional performance with aggressive formulas.
- Pure Path technology.

### Closure Sizes

24-410, 28-400, GS26

### Output

0.35, 0.50, 0.70 ml

### Applications

Body care, sun care, skin care, hair care



## Mark VI & Spray Extender

### Key Features

- Excellent atomization and priming capabilities.
- Highly cost-effective.
- Easy actuation head.
- Built for 55% VOC formulations.
- Available in an array of spray options.

### Closure Sizes

18-415, 20-410, 22-415, 24-410

### Output

0.14, 0.16 ml

### Applications

Hair care, personal care, body care requiring fine mist or spray atomization; also suitable for food and car care products



## Mini Trigger Curve & Petite

### Key Features

- Enhanced shelf presence.
- Integrated button lock.
- Ergonomic design.
- Suitable for medium-to high-viscosity gels and creams.
- Petite design for improved ergonomics, optimized fill line and retail distribution.

### Closure Sizes

20-410 or 24-410 free spinning, smooth wall

### Output

0.16 to 0.30ml

### Applications

Hair care, skin care, sun care, high-viscosity formulas

01928 703 160  
bottles@dormex.co.uk



Dormex**Containers**